

### Characteristics



Continuous Duty



HEPA - Included



High Filtration Efficiency Unit



Dry Recovery



Detachable Tank



SS 304



SD Accessories - Included



- Complies with NFPA 652 paragraph 8.4.2.2.1.7 and NFPA 654 paragraph 8.4.3.7 (1) to (7)
- Industrial continuous duty vacuum system
- Very powerful machine capable of working with large diameter suction hoses up to 70 mm. Perfect for Food industry, machine shops, Plastics industry, Ceramics industry, printing, textiles, heavy clean-up, etc.
- Regenerative blower with TEFC induction motor rated for continuous duty
- Includes a star shaped main filter
- Manual Filter Shaker (MFS) system
- Upstream filter cartridge for fine dust
- HEPA filter with an efficiency of 99.995% at 0.3 micron. Tested IEST-RP-CC001. H14 by MPPS method as per EN 1822 and OSHA compliant. All of our HEPA vacuum systems are aerosol leak tested before leaving our facility - included
- Detachable recovery tank (DT) for easy disposal of recovered materials
- Filter chamber and recovery tank made of stainless steel Type 304
- Sight glass installed on recovery tank
- Exhaust silencer for a quiet operation
- Includes a complete static dissipative tool kit

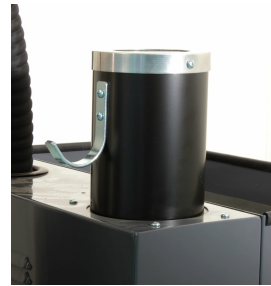
# Specifications

Please note that specifications are subject to change without notice

## Use only recommended tools & accessories



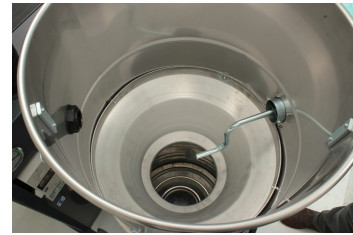
Filter Blockage Indicator Gage. Manual Starter with Overload Protection



Integrated Silencer



Side Mounted Manual Filter Shaker



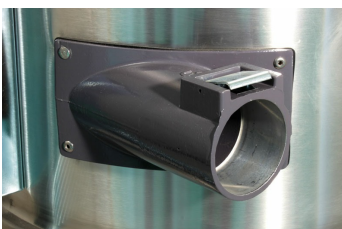
Side Mounted Manual Filter Shaker (Internal View)



Sight Glass on Recovery Tank



HEPA Filter - Included



Tangential Suction Inlet, 70 mm, Aluminum



Conductive Star Shaped Filter with Cage for ORDLOC 652 - Included



Ø2" (Ø50 mm) Static Conductive Tool Kit - Included